



# NORTH AMERICAN DERMATOLOGY

M&A Activity and Valuation Trends  
Q3 | 2018



**Robert Ullman**  
Managing Director  
rullman@dinancapital.com  
415.613.4114

**William Downing**  
Managing Director  
wdowning@dinancapital.com  
602.734.0682

**Michael Pucci**  
Associate Director  
mpucci@dinancapital.com  
602.734.0667

**Michael Hilcove**  
Senior Associate  
mhilcove@dinancapital.com  
602.734.0626

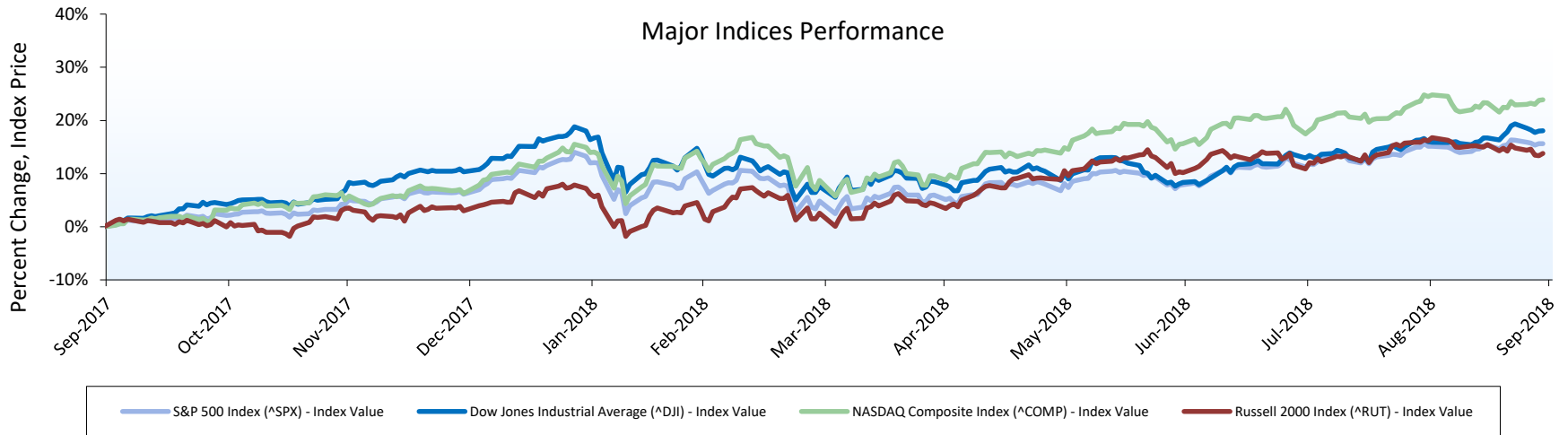
**Michael Reister**  
Senior Analyst  
mreister@dinancapital.com  
602.734.0663

# Table of Contents

Section	Page
I. Economic Indicators	3
II. Industry Overview	4
III. Mergers and Acquisitions Overview	6
IV. Third Quarter Transactions Overview	7
V. Dinan Capital Advisors	8

# Economic Indicators

## Macroeconomic Overview



Index	As of 12/31/2017	As of 03/31/2018	As of 06/30/2018	As of 09/30/2018
^SPX	2673.61	2640.87	2718.37	2913.98
^COMP	6903.39	7063.45	7510.30	8046.35
^DJI	24719.22	24103.11	24271.41	26458.31
^RUT	1535.51	1529.43	1643.07	1696.57

### Major Economic Indicators

Economic Indicator	2013	2014	2015	2016	2017
Real GDP (% change)	2.20%	2.40%	3.00%	2.08%	2.30%
CPI (% change)	1.50%	1.62%	1.90%	2.38%	2.20%
Cons. Spending (% change)	2.40%	2.50%	2.90%	3.10%	3.30%
Nonfarm Productivity	0.90%	0.70%	-2.20%	1.00%	1.50%
Unemployment Rate	7.40%	6.20%	5.80%	4.40%	4.10%

### Interest Rates

Interest Rates	12/31/2017	03/31/2018	06/30/2018	09/30/2018
United States Treasury - 2 Year	1.89%	2.27%	2.52%	2.81%
United States Treasury - 5 Year	2.20%	2.56%	2.73%	2.94%
United States Treasury - 10 Year	2.40%	2.74%	2.85%	3.05%
United States Treasury - 30 Year	2.74%	2.97%	2.98%	3.19%
United States Prime Rate	4.50%	4.75%	5.00%	5.25%

Source: Capital IQ, S&P NetAdvantage

# Industry Overview

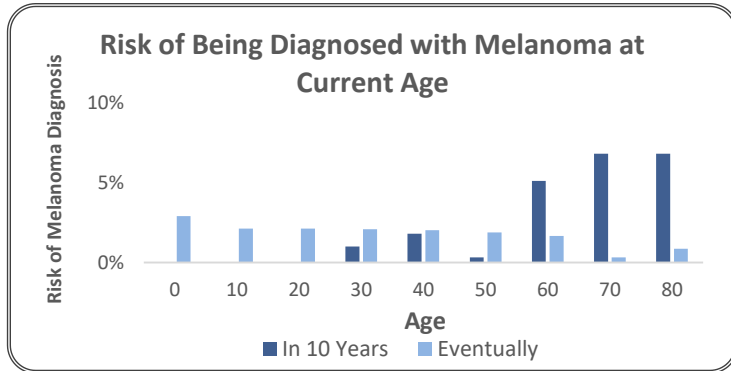
## Key Drivers

Trends	Impact
Increase in Skin Cancer Diagnoses	Perhaps the most important drivers in the increase of dermatological procedures are the rise of skin cancer awareness and skin cancer diagnoses. This trend is expected to continue through 2016 with 76,380 new diagnoses projected to occur in 2016 alone, which would be up from 75,000 in 2009.
Market Consolidation	The dermatology industry is highly fragmented and is expected to consolidate due to soaring medical costs. As rising costs reduce profit for services provided by dermatologists, many are looking to leave their practices in favor of multi-physician establishments.
Decreasing Number of Private Practices	Along with higher medical costs discouraging new and current dermatologists to begin or continue solo practices, many are opting to join multi-physician firms to increase focus on their services rather than worry about running a practice.
Aging Populations	With the current population beginning to age, susceptibility to skin cancer has seen a corresponding increase. Cosmetic procedures have also seen a resurgence with an aging population and recovering economy. These factors have and will continue to spur demand in the dermatology sector.
Rising Demand Outpacing the Number of Available Dermatologists	As demand for dermatological procedures increases, the ratio of individuals needing assistance to practicing dermatologists will increase to the point where the high demand cannot be serviced by the static residency training capacity each year.

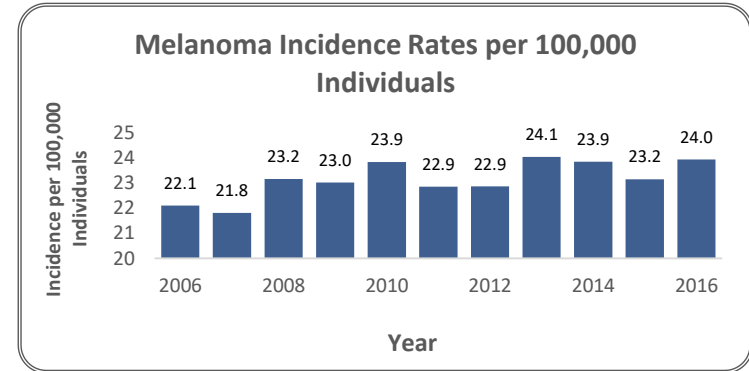
Sources: American Academy of Dermatology, IBIS World

# Industry Overview

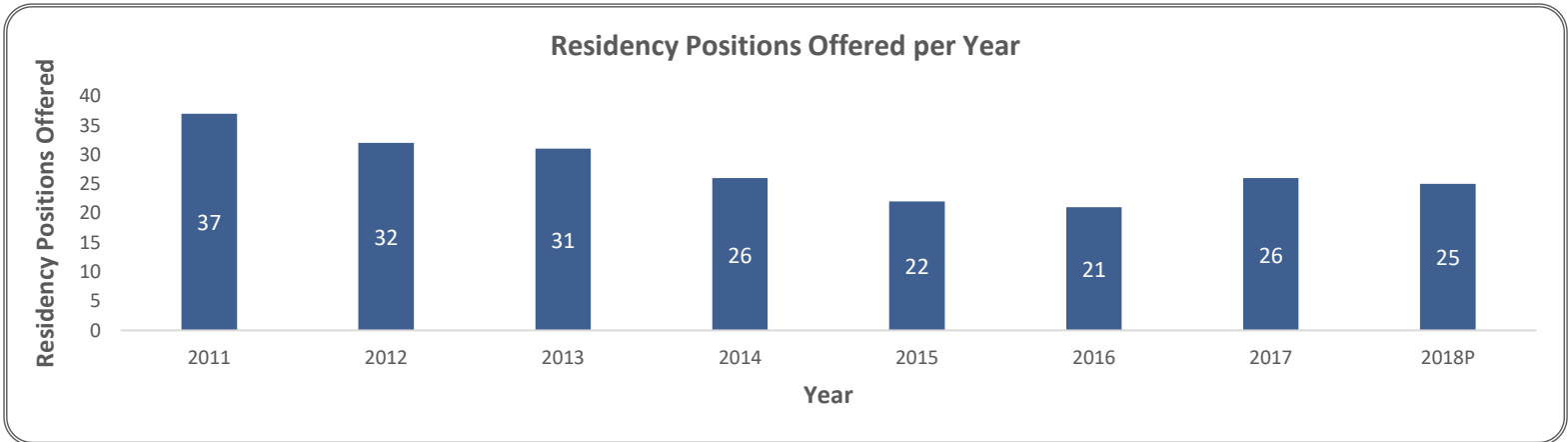
## Dermatology



Based on this chart, as individuals age, the potential risk of being diagnosed with Melanoma within the next 10 years increases while the overall eventual risk decreases.



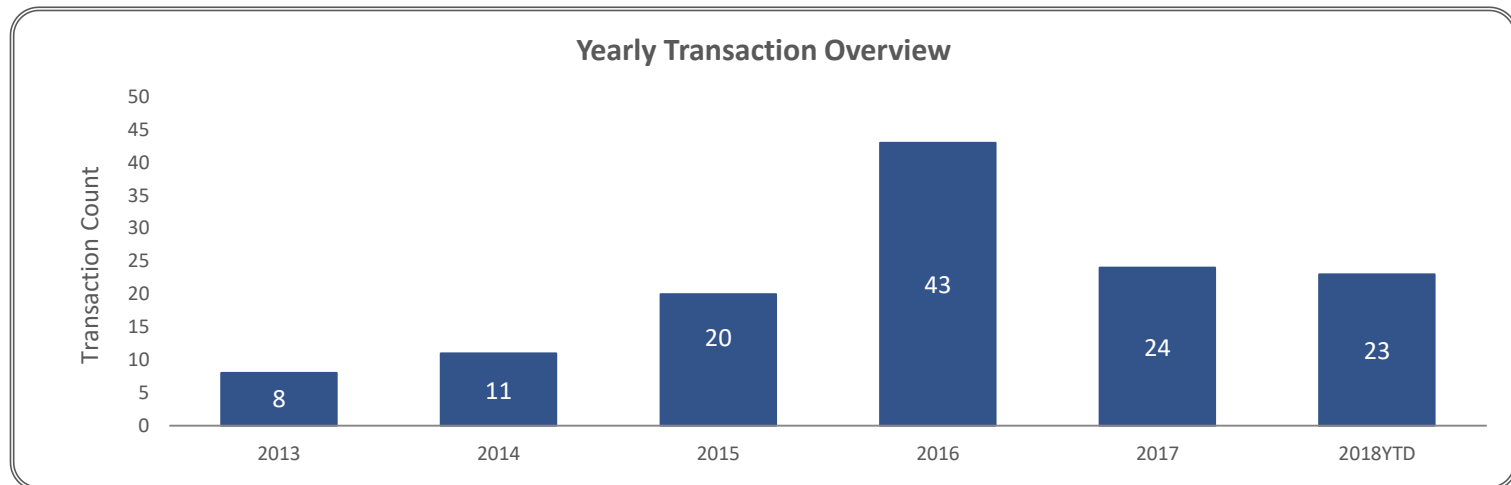
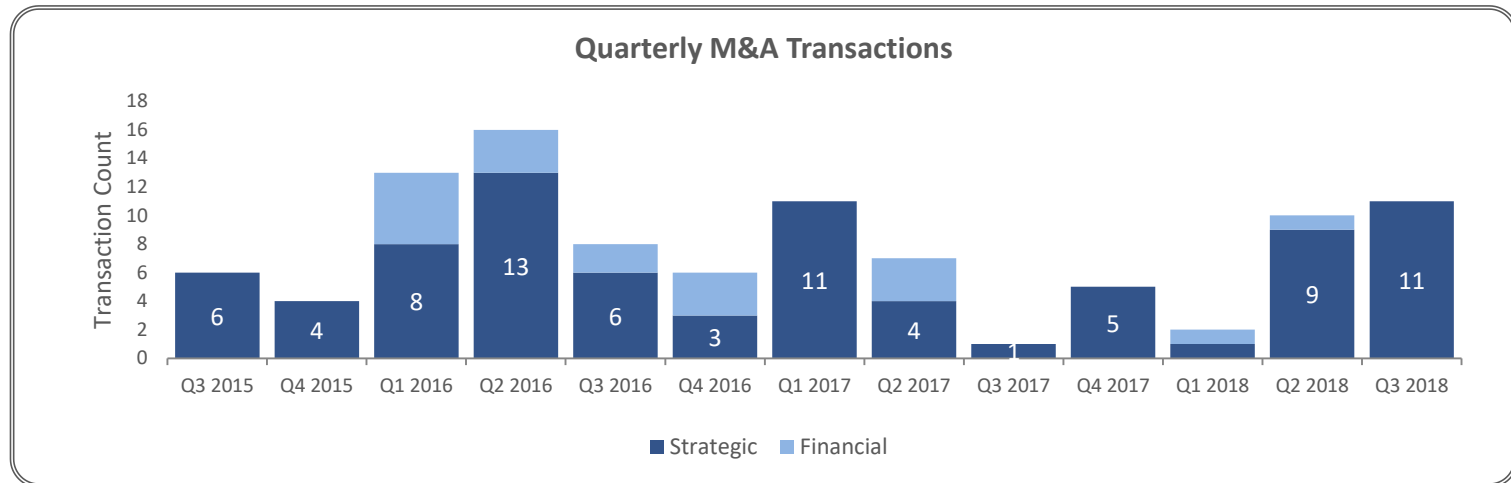
In the span of 10 years from 2006-2016, the number of individuals diagnosed with Melanoma has steadily increased from 22.11 incidents per 100,000 individuals to 23.95 per 100,000 individuals.



Sources: National Resident Matching Program, SEER Cancer Statistics

# Mergers & Acquisitions Overview

## Dermatology



Sources: Capital IQ

# Third Quarter Transactions Overview

## Dermatology

Date	Acquirer	Target	Industry Segment	Target LTM		Enterprise Value	Enterprise Value / LTM	
				Revenue	EBITDA		Revenue	EBITDA
9/21/18	Almirall, LLC	US Dermatology Portfolio of Allergan plc	Dermatology Services	-	-	\$650.00	-	-
9/19/18	Pinnacle Dermatology, LLC	Walter Barkey, MD, PLLC	Dermatology Services	-	-	-	-	-
9/17/18	PhyNet Dermatology LLC	Northeast Dermatology	Dermatology Services	-	-	-	-	-
9/4/18	Schweiger Dermatology Group, PLLC	Pennsylvania Centre for Dermatology, LLC	Dermatology Services	-	-	-	-	-
8/28/18	Epiphany Dermatology, PA	Sun City Dermatology, P.A.	Dermatology Services	-	-	-	-	-
8/15/18	Pinnacle Dermatology, LLC	North Oakland Dermatology, P.C.	Dermatology Services	-	-	-	-	-
8/7/18	Pinnacle Dermatology, LLC	Duneland Dermatology, P.C.	Dermatology Services	-	-	-	-	-
8/1/18	Epiphany Dermatology, PA	NuLook Dermatology	Dermatology Services	-	-	-	-	-
7/16/18	Epiphany Dermatology, PA	Cherry Creek Dermatology, P.C.	Dermatology Services	-	-	-	-	-
7/11/18	Synteract, Inc.	Cu-Tech, LLC	Dermatology Services	-	-	-	-	-
7/9/18	AAD Dermatology Management, LLC	Virginia Dermatology & Skin Cancer Center	Dermatology Services	-	-	-	-	-

Sources: Capital IQ

# Dinan Capital Advisors

## Disclaimer

The information and views contained in this report were prepared by Dinan Capital Advisors, LLC. (“Dinan”). It is not a research report, as such term is defined by applicable law and regulations, and is provided for informational purposes only. It is not to be construed as an offer to buy or sell or a solicitation of an offer to buy or sell any financial instruments or to participate in any particular trading strategy and is provided for informational purposes only. The information contained herein is believed by Dinan to be reliable, but Dinan makes no representation as to the accuracy or completeness of such information. Opinions, estimates and projections in this report constitute Dinan’s judgment and are subject to change without notice. Also, past performance is not necessarily indicative of future results. Any unauthorized reproduction of this information is strictly prohibited.

This report may contain references to registered trademarks, service marks and copyright owned by third-party information providers. None of the third-party information providers is endorsing the offering of, and shall not in any way be deemed an issuer or underwriter of, the securities, financial instruments or other investments discussed in this report, and shall not have any liability or responsibility for any statements made in the report or for any financial statements, financial projections or other financial information contained or attached as an exhibit to the report. For more information about the materials provided by such third parties, please contact us through the contact information provided on the following page.



# Dinan Capital Advisors



Dinan Capital Advisors delivers a highly tailored strategic approach for middle-market companies that seek to capitalize on merger and acquisition transactions. Our services are comparable in scope to those employed by Wall Street investment banks for the world's most profitable multinational corporations, while using methodologies, processes and cost-effective structures that make sense for middle-market companies.

Based on a highly structured process that leverages our experience, research capabilities, and proprietary technology platforms, we initiate every engagement by first assessing the market climate, and then developing an understanding of the current situation and strategic objectives of each company. From there, we partner with our clients to develop a plan that maximizes shareholder value and delivers the optimal transaction outcome.

Dinan is the registered FINRA member broker-dealer division of the Dinan Group of Companies, responsible for executing the securities related transactions of the firm. The Dinan Group is a leading diversified financial services company with over 25 years of advisory and merchant banking experience dedicated to middle-market transactions.

*For any query regarding this report, please contact:*

**Robert Ullman**  
**Managing Director**

rullman@dinancapital.com  
415.613.4114

**William Downing**  
**Managing Director**

wdowning@dinancapital.com  
602.734.0682

**Michael Pucci**  
**Associate Director**

mpucci@dinancapital.com  
602.734.0667

**Michael Hilcove**  
**Senior Associate**

mhilcove@dinancapital.com  
602.734.0626

**Michael Reister**  
**Senior Analyst**

mreister@dinancapital.com  
602.734.0663